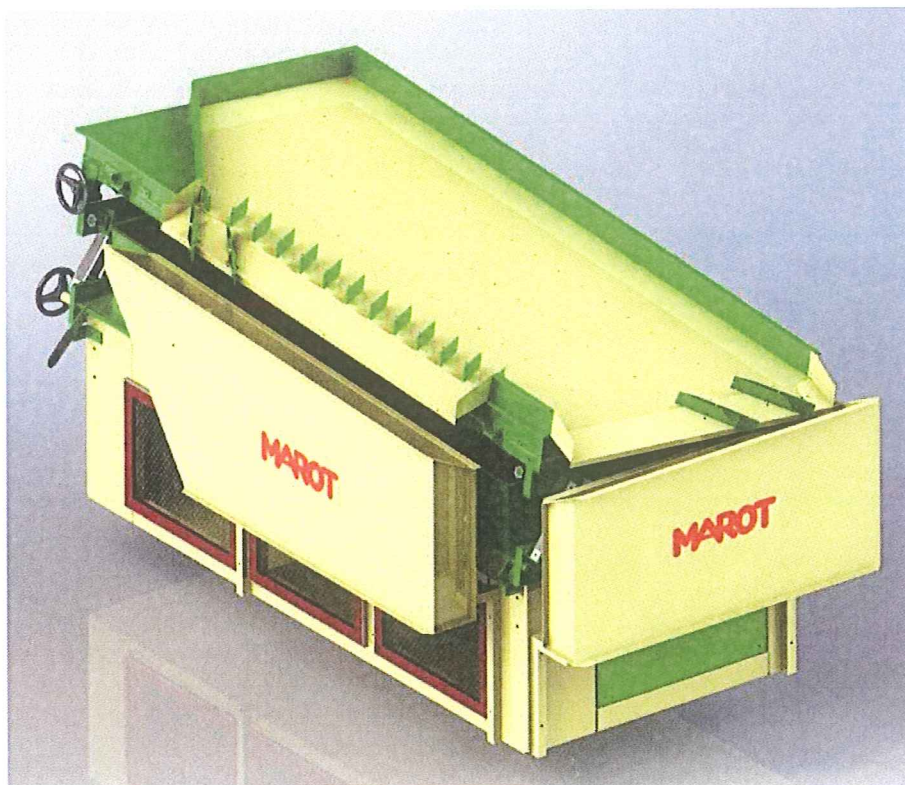


DENSITY TABLE Type 6 Fans Model

MAROT[®]



FUNCTION

The MAROT density table can:

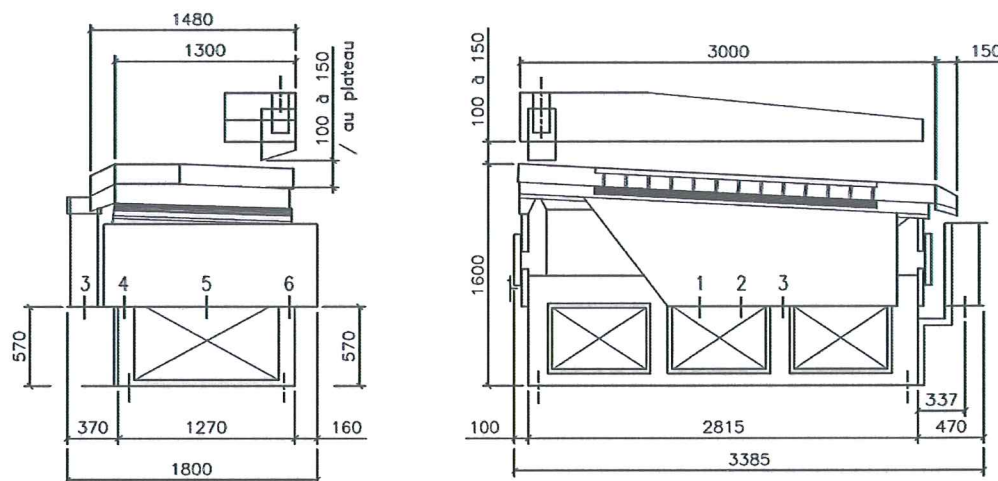
- separate grains with poor germination
- separate shrunken, damaged, diseased and germinating grains
- separate the impurities from the grain
- increase the bulk density of a sample
- remove split, scalped, and broken pulses

ADJUSTABLE SETTINGS

- * Longitudinal slope of table
- * Lateral slope of table
- * Air volume
- * Speed of oscillation
- * Outlet chutes (electronic variator)



DIMENSIONS TD6 IT 999 - 07



INSTALLATION

The table must be fixed to a firm foundation, able to accept the vibrations transmitted from the table but not to impede the correct operation of the table.

The aspiration hood (option) covers the feeding chute - Required air volume: 10 000 m³/h.

The standard outlets of 200 x 200 are generally used as follows:

1 - Heavy impurities	4 - Medium and light grain
2 - Recycling of heavy	5 - Recycling of light
3 - Heavy and medium grain	6 - Light impurities

FEED

The machine can be fed directly from an elevator or conveyor, when installed in a cleaning line. Where the flow of grain may be interrupted, a buffer hopper should be used, and this is a necessity where the machine throughput will be varied according to the sample required.

PRINCIPLE

This machine classifies the grain according to the specific weight.

The sloping table is oscillated at the appropriate speed for the sample and this induces the heavier grains to move to the top of the table and the lighter grains to the bottom. This movement is made possible by the air flow through the grain which fluidises the bed ensuring the lighter material moves to the top.

At the outlets, adjustments provide easy separation of the various streams of material such as the heavier grains, lighter grains, trash, etc ...

CARACTÉRISTIQUES TECHNIQUES

Throughput : 6/8 t/h - (Maximum throughputs wheat at 750 kg/m, 15 % moisture content 2 % impurities)
 Shaking power : 3 kW - 1500 tr/mn (or vibration power)
 Fan vibration : 7.5 kW - 1500 tr/mn
 Weight : 1300 kg

As we are constantly engaged in an effort to improve the quality and efficiency of our products, dimensions and specifications could change without notice



C.F.C.A.I. SAS Route de Montgérain - BP 4 - 60420 **TRICOT** (France)

Tél. : + 33 (0)3 44 51 53 50 - Fax : + 33 (0)3 44 51 00 84

E-mail : cfc@groupecfc.fr - export@groupecfc.fr

RCS BEAUVAIS B 329 152 375

Propriétaire des marques : **LAW** **MAROT** **OMNIUM** **salto** **DAGUET**

